

**BENCHMARKS - NAVD88**

ELEVATION - 786.70  
 SQUARE ON 18" CONCRETE LIGHT POLE  
 BASE, LOCATED 26' NW OF NORTH BACK OF  
 CURB TO PARKING LOT & 100'± NNE OF  
 THE NW CORNER OF PARKING LOT TO  
 RIDGEMOOR PARK ELEMENTARY SCHOOL.

ELEVATION - 783.71  
 SQUARE ON THE NE CORNER OF A 2.5'x2.5'  
 CONCRETE WATER METER PIT, 9' WEST OF  
 BUILDING WALL, LOCATED AT THE MOST  
 NORTHWESTLY CORNER OF RIDGEMOOR PARK  
 ELEMENTARY SCHOOL.

**CONTROL POINTS - MI SOUTH SPCS 83**

CP#1	CP#2	CP#3	CP#4
M+B RED CAP	M+B RED CAP	M+B RED CAP	M+B RED CAP
N 522085.8614	N 521897.0326	N 521992.3369	N 522032.4867
E 12791923.1334	E 12791833.9773	E 12792063.7942	E 12792089.1337
ELEV 786.72	ELEV 782.26	ELEV 783.52	ELEV 783.67

**EXISTING UNDERGROUND UTILITY DATA**

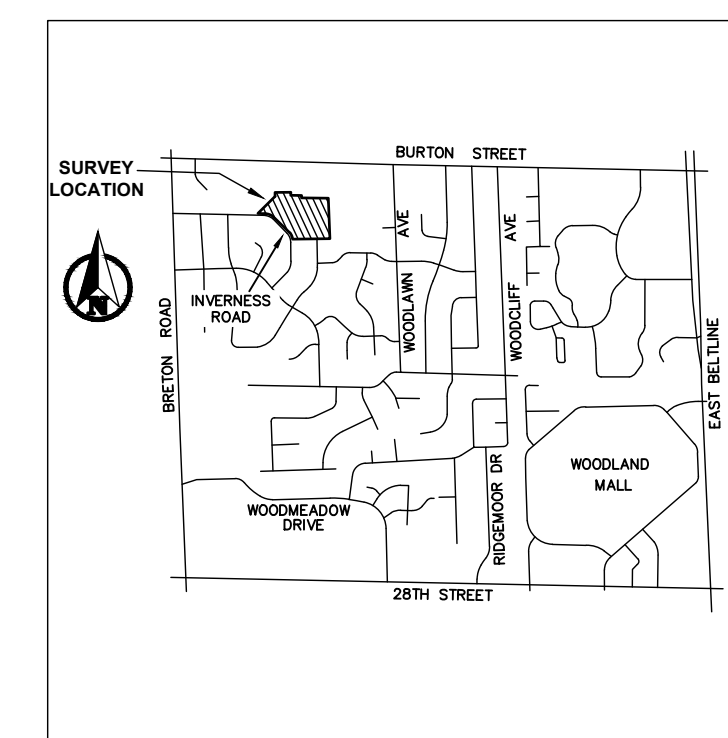
- STORM CB#1**  
RIM 783.03  
12" CONC INV NW 777.03  
12" CONC INV SSW 776.83  
BOTTOM STRUCTURE 775.18  
2' DIA RIM  
4' DIA PRECAST STRUCTURE
- STORM CB#2**  
RIM 783.70  
12" CONC INV NE 778.10  
12" CONC INV WNW 778.10  
BOTTOM STRUCTURE 777.10  
2' DIA RIM  
4' DIA PRECAST STRUCTURE
- WATER METER PIT#3**  
RIM 783.00  
TOP WIRES 781.90  
BOTTOM STRUCTURE 781.20  
2'x2' SO RIM  
2'x2' CONC BLOCK STRUCTURE
- STORM CB#4**  
RIM 781.16  
6" CONC INV NE 778.06  
8" CONC INV WNW 777.76  
12" CONC INV NW 777.66  
12" CONC INV SE 777.66  
BOTTOM STRUCTURE 777.51  
2' DIA RIM  
4' DIA PRECAST STRUCTURE
- STORM CB#5**  
RIM 781.85  
6" CONC INV W 778.25  
12" CONC INV SE 778.25  
BOTTOM STRUCTURE 778.25  
2' DIA RIM  
4' DIA PRECAST STRUCTURE
- STORM CB#6**  
RIM 787.55  
8" CONC INV W 776.75  
12" CONC INV NW 776.75  
BOTTOM STRUCTURE 776.55  
2' DIA RIM  
4' DIA PRECAST STRUCTURE
- STORM CB#7**  
RIM 787.76  
6" CONC INV SW 780.76  
BOTTOM STRUCTURE 779.96  
2' DIA RIM  
4' DIA PRECAST STRUCTURE
- STORM CB#8**  
RIM 782.14  
SILTSACK
- STORM CB#9**  
RIM 779.72  
12" CONC INV NW 777.07  
12" CONC INV S 776.32  
12" CONC INV SE 776.26  
BOTTOM STRUCTURE 773.92  
2' DIA RIM  
4' DIA CONC BLOCK STRUCTURE
- STORM MH#10**  
RIM 780.61  
12" CONC INV SE 777.41  
12" CONC INV W 777.36  
BOTTOM STRUCTURE 777.21  
2' DIA RIM  
4' DIA CONC BLOCK
- STORM MH#11**  
RIM 779.48  
10" CONC INV NNE 775.28  
12" CONC INV NW 775.98  
12" CONC INV SE 774.78  
BOTTOM STRUCTURE 774.78  
2' DIA RIM  
4' DIA CONC BLOCK STRUCTURE
- SANITARY MH#12**  
RIM 779.95  
8" CLAY INV NW 769.85  
8" CLAY INV SE 769.65  
2' DIA RIM  
4' DIA PRECAST STRUCTURE
- STORM MH#13**  
RIM 780.33  
12" CONC INV N 777.83  
12" CONC INV E 777.68  
BOTTOM STRUCTURE 775.63  
2' DIA RIM  
4' DIA PRECAST STRUCTURE
- STORM CB#14**  
RIM 779.79  
4" PVC INV NE 776.79  
8" PVC INV N 776.79  
10" PVC INV SSW 776.59  
BOTTOM STRUCTURE 776.19  
2' DIA RIM  
4' DIA PRECAST STRUCTURE
- WATER METER PIT#15**  
RIM 783.63  
TOP WIRES 782.63  
BOTTOM STRUCTURE 781.63  
2'x2' SO RIM  
2'x2' CONC BLOCK STRUCTURE
- STORM CB#16**  
RIM 780.24  
8" PVC INV S 777.39  
BOTTOM STRUCTURE 777.34  
2' DIA RIM  
4' DIA PRECAST STRUCTURE
- WATER METER PIT#17**  
RIM 781.28  
4" STEEL INV SW-NE 774.66  
6" STEEL INV SW-NE 774.66  
BOTTOM STRUCTURE 772.46  
2'x2' SO RIM  
FALSE PRECAST STRUCTURE
- WATER METER PIT#18**  
RIM 783.28  
TOP WIRES 782.78  
BOTTOM STRUCTURE 781.28  
2'x2' SO RIM  
2'x2' CONC BLOCK STRUCTURE
- STORM CB#19**  
RIM 782.41  
4" PVC INV SSW 778.81  
6" PVC INV E 778.71  
BOTTOM STRUCTURE 778.31  
2' DIA RIM  
4' DIA PRECAST STRUCTURE
- SANITARY MH#20**  
RIM 780.43  
8" CLAY INV W 770.53  
8" CLAY INV SE 770.43

**SOIL BORING DATA LIST**

SB #	DEPTH	DESCRIPTION
SB #1	0 - 5'	ASPHALT
	5' - 8'	GRAVEL
	8' - 5'	CLAY BROWN/LOAM ORGANIC MATERIAL
SB #2	0 - 8'	ASPHALT
	8' - 9'	GRAVEL
	9' - 5'	CLAY BROWN/LOAM ORGANIC MATERIAL

**GENERAL DEMOLITION NOTES:**

- THE CONTRACTOR SHALL OBTAIN ALL PERMITS AND SURETY AS PART OF THIS WORK.
- THE CONTRACTOR SHALL CALL MISS DIG 3 WORKING DAYS PRIOR TO THE START OF CONSTRUCTION.
- THE CONTRACTOR SHALL REMOVE ALL CONCRETE, BIT PAVEMENT, STORM SEWER STRUCTURES, STORM SEWER PIPE, LIGHT POLES, FENCING, UNDERGROUND ELECTRIC, VEGETATION AND SO ON TO PREPARE THE SITE FOR IMPROVEMENTS, CASTINGS, VALVE BOXES AND/OR OTHER UTILITY STRUCTURES TO REMAIN SHALL BE ADJUSTED AND PROTECTED FROM DAMAGE.
- ALL SOIL EROSION CONTROL MEASURES SHALL COMPLY ACT 451 OF PUBLIC ACTS OF 1997, SOIL EROSION AND SEDIMENTATION CONTROL, NATURAL RESOURCES AND ENVIRONMENTAL PROTECTION ACT.
- ALL SOIL EROSION CONTROL MEASURE SHALL BE IN PLACE PRIOR TO COMMENCEMENT OF EARTHWORK ACTIVITIES.
- THE CONTRACTOR SHALL CLEAN PUBLIC STREETS DAILY OF ANY DIRT AND/OR DEBRIS FROM CONSTRUCTION SITE.

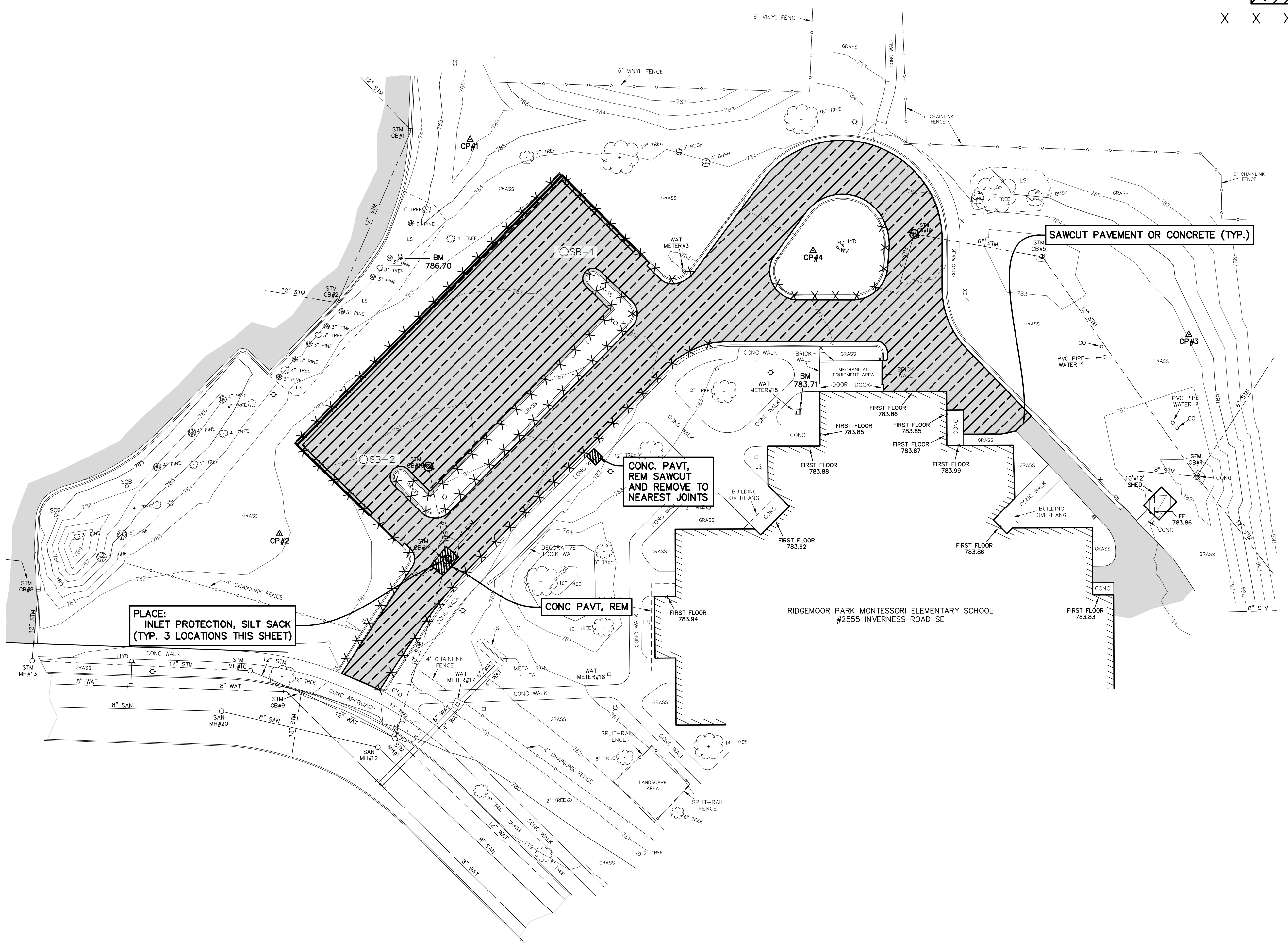
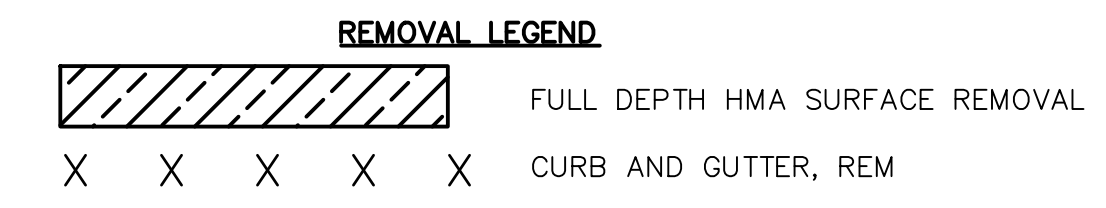


0 15 30  
 PLAN SCALE: 1" = 30'

**811**  
 Know what's below.  
 Call before you dig.

**INLET PROTECTION NOTE**

- CLEANOUT ALL STORM MANHOLES AND CATCH BASINS LOCATED WITHIN PROJECT AREA



P:220168.01 Grand Rapids Public Schools - Various Sites\CAD\DWG\RIDGEMOOR\220168.01 RIDGEMOOR DESIGN SHEETS.dwg - 4/14/2024 12:31:17 PM ZACHVOOGT

Utility locations are approximate only.  
 Please contact "Miss Dig" three working days prior to the start of construction for exact locations.  
 (1-800-482-7171)

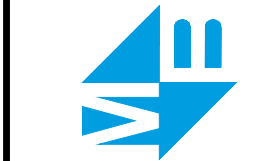
PLAN REVISIONS

01-18-2023 UNDER REVIEW

03-19-2024 ISSUED FOR BIDS

04-04-2024 ADDENDUM #1

**Moore+Bruggink**  
 Consulting Engineers  
 2020 Monroe Ave.  
 Grand Rapids, MI 49505  
 (616) 363-9801  
 mail@moorebruggink.com



**SURVEY AND REMOVALS**  
 FOR  
**RIDGEMOOR MONTESORRI**  
 CITY OF GRAND RAPIDS, KENT COUNTY, MICHIGAN

2555 INVERNESS RD SE, GRAND RAPIDS, MI 49546

FIELD SURVEY / DATE  
 JP-DTS / 11-09-22

PROJECT NO.  
 220168.01

DESIGN DRAWN BY:  
 BCC

DESIGNED BY:  
 ZSV

CHECKED BY:  
 ZSV

PLAN DATE:  
 01-24-23

SHEET NUMBER  
**1 OF 5**

**BENCHMARKS - NAVD88**

ELEVATION - 786.70  
 SQUARE ON 18" CONCRETE LIGHT POLE  
 BASE, LOCATED 26' NW OF NORTH BACK OF  
 CURB TO PARKING LOT & 100'± NNE OF  
 THE NW CORNER OF PARKING LOT TO  
 RIDGEMOOR PARK ELEMENTARY SCHOOL.

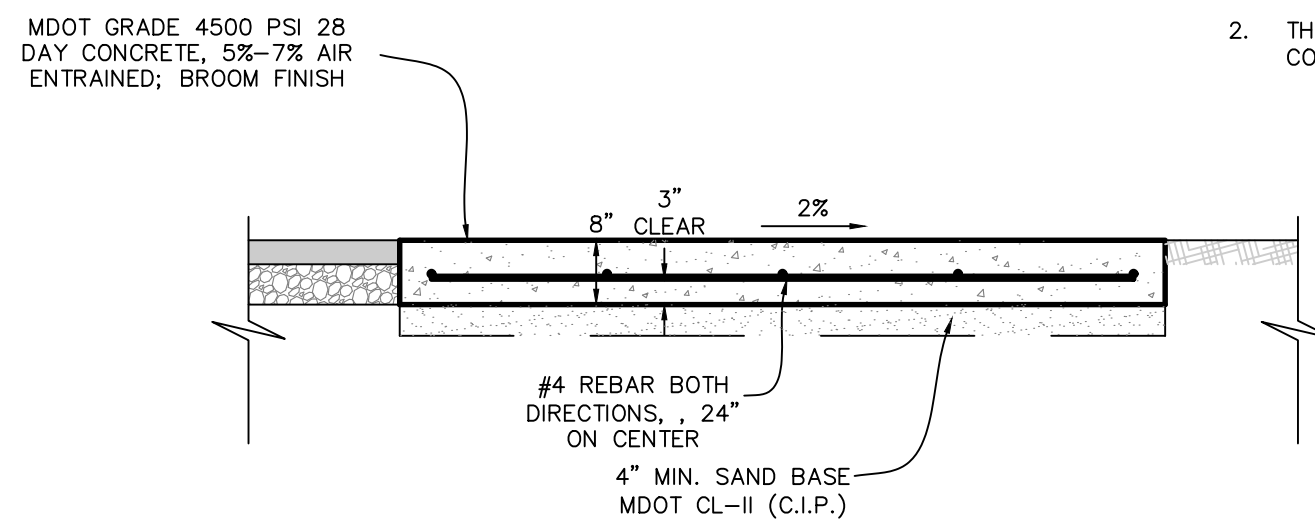
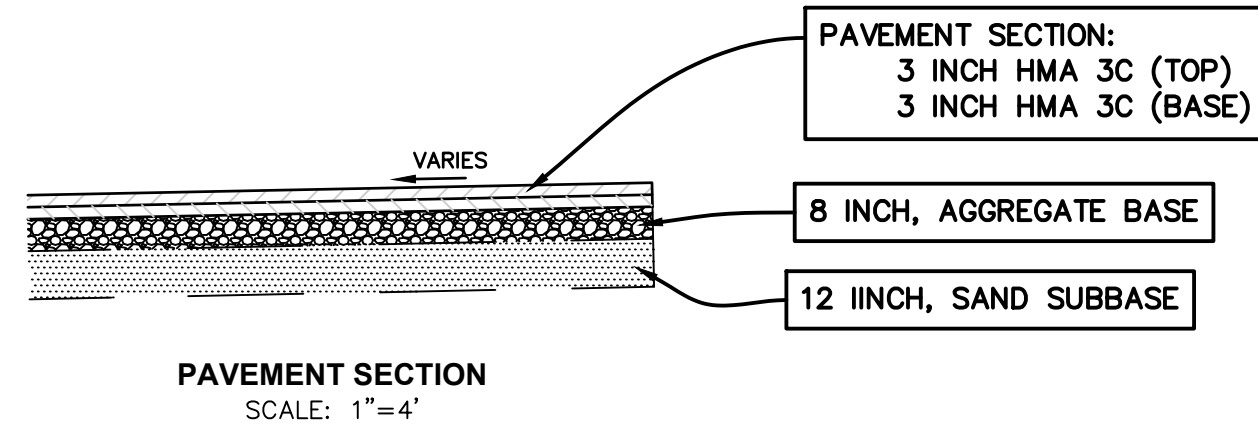
ELEVATION - 783.71  
 SQUARE ON THE NE CORNER OF A 2.5'x2.5'  
 CONCRETE WATER METER PIT, 9' WEST OF  
 BUILDING WALL, LOCATED AT THE MOST  
 NORTHWESTERLY CORNER OF RIDGEMOOR PARK  
 ELEMENTARY SCHOOL.

**CONTROL POINTS - MI SOUTH SPCS 83**

CP#1	CP#2	CP#3	CP#4
M+B RED CAP	M+B RED CAP	M+B RED CAP	M+B RED CAP
N 522085.8614	N 521897.0326	N 521992.3369	N 522032.4867
E 12791925.334	E 12791833.9773	E 12792089.7942	E 12792089.1337
ELEV 786.72	ELEV 782.26	ELEV 783.52	ELEV 783.67

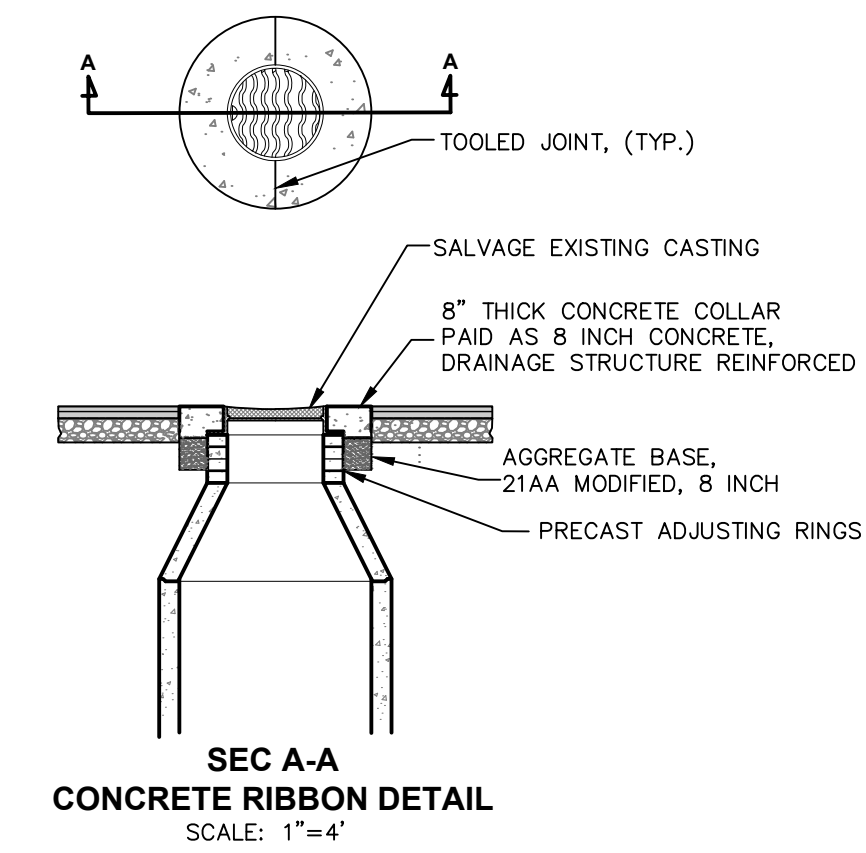
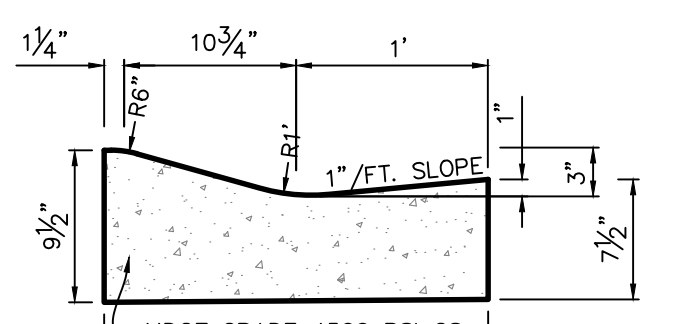
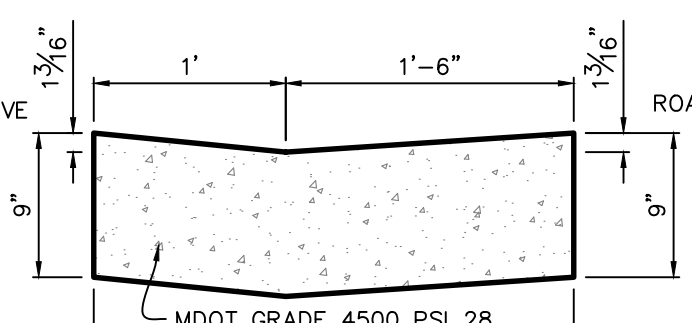
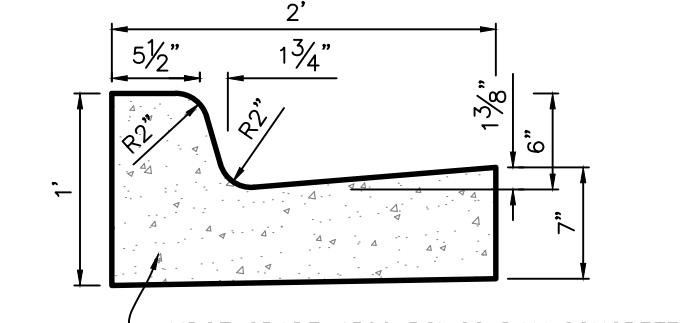
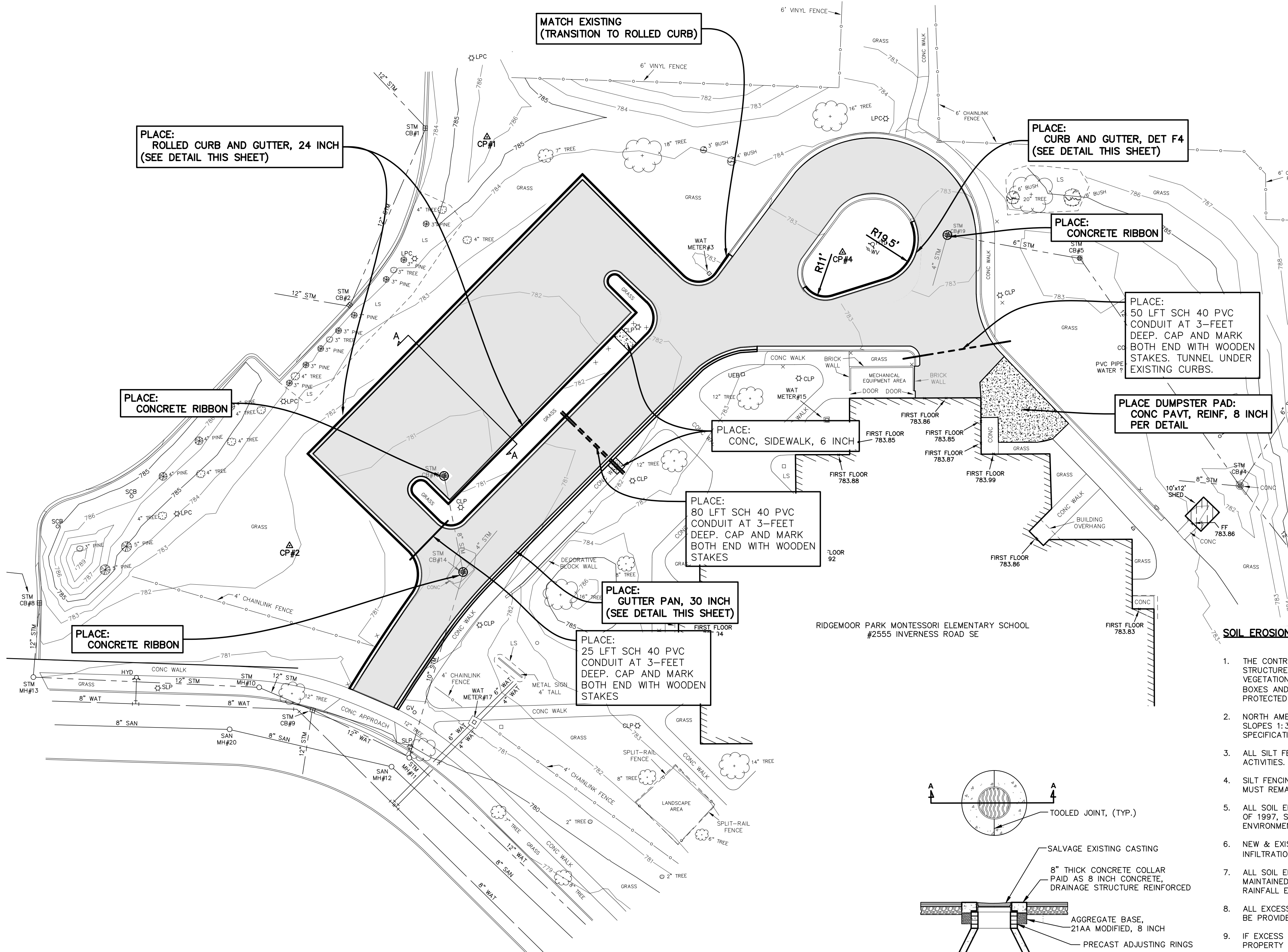
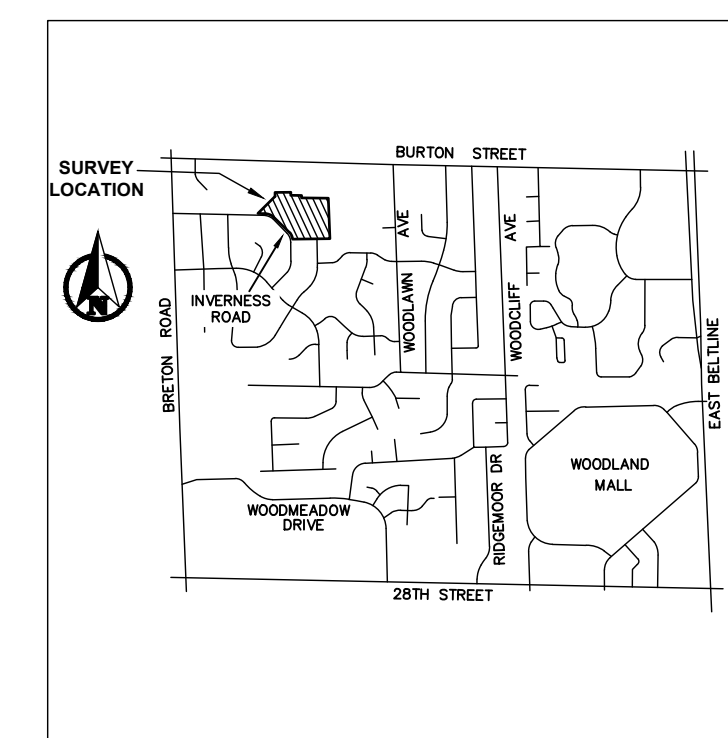
**EXISTING UNDERGROUND UTILITY DATA**

STORM CB#1 RIM 783.03 12" CONC INV NW 777.03 12" CONC INV SSW 776.83 BOTTOM STRUCTURE 775.18 2' DIA RIM 4' DIA PRECAST STRUCTURE	STORM CB#2 RIM 783.70 12" CONC INV NE 778.10 12" CONC INV NW 778.10 12" CONC INV SE 777.10 2' DIA RIM 4' DIA PRECAST STRUCTURE	STORM CB#3 RIM 781.90 BOTTOM STRUCTURE 781.20 2'x2' SO RIM 2'x2' CONC BLOCK STRUCTURE	STORM CB#4 RIM 781.16 6" CONC INV NE 778.06 8" CONC INV WNW 777.76 12" CONC INV NW 777.66 12" CONC INV SE 777.66 BOTTOM STRUCTURE 777.51 2' DIA RIM 4' DIA PRECAST STRUCTURE	STORM CB#5 RIM 781.85 6" CONC INV W 778.25 12" CONC INV SE 778.25 BOTTOM STRUCTURE 778.25 2' DIA RIM 4' DIA PRECAST STRUCTURE	STORM CB#6 RIM 787.55 8" CONC INV W 776.75 12" CONC INV NW 776.75 BOTTOM STRUCTURE 776.55 2' DIA RIM 4' DIA PRECAST STRUCTURE	STORM CB#7 RIM 787.76 6" CONC INV SW 780.76 BOTTOM STRUCTURE 779.96 2' DIA RIM 4' DIA PRECAST STRUCTURE	STORM CB#8 RIM 782.14 SILTSACK	STORM CB#9 RIM 779.72 12" CONC INV NW 777.07 12" CONC INV S 776.32 12" CONC INV SE 776.26 BOTTOM STRUCTURE 773.92 2' DIA RIM 4' DIA CONC BLOCK STRUCTURE	STORM CB#10 RIM 780.61 12" CONC INV SE 777.41 12" CONC INV W 777.36 BOTTOM STRUCTURE 777.21 2' DIA RIM 4' DIA CONC BLOCK	STORM MH#11 RIM 779.48 10" CONC INV NNE 775.28 12" CONC INV NW 775.98 12" CONC INV SE 774.78 BOTTOM STRUCTURE 774.78 2' DIA RIM 4' DIA CONC BLOCK STRUCTURE	SANITARY MH#12 RIM 779.95 8" CLAY INV NW 769.85 8" CLAY INV SE 769.65 2' DIA RIM 4' DIA PRECAST STRUCTURE	STORM MH#13 RIM 780.83 12" CONC INV N 777.83 12" CONC INV E 777.68 BOTTOM STRUCTURE 775.63 2' DIA RIM 4' DIA PRECAST STRUCTURE	STORM CB#14 RIM 779.79 4" PVC INV NE 776.79 8" PVC INV N 776.79 10" PVC INV SSW 776.59 BOTTOM STRUCTURE 776.19 2' DIA RIM 4' DIA PRECAST STRUCTURE	WATER METER PIT#15 RIM 783.63 TOP WIRES 782.63 BOTTOM STRUCTURE 781.63 2'x2' SO RIM 2'x2' CONC BLOCK STRUCTURE	STORM CB#16 RIM 780.24 8" PVC INV S 777.39 BOTTOM STRUCTURE 777.34 2' DIA RIM 4' DIA PRECAST STRUCTURE	WATER METER PIT#17 RIM 781.28 4" STEEL INV SW-NE 774.66 6" STEEL INV SW-NE 774.66 BOTTOM STRUCTURE 772.46 2'x2' SO RIM FALSE PRECAST STRUCTURE	WATER METER PIT#18 RIM 783.28 TOP WIRES 782.78 BOTTOM STRUCTURE 781.28 2'x2' SO RIM 2'x2' CONC BLOCK STRUCTURE	STORM CB#19 RIM 782.41 4" PVC INV SSW 778.81 6" PVC INV E 778.71 BOTTOM STRUCTURE 778.31 2' DIA RIM 4' DIA PRECAST STRUCTURE	SANITARY MH#20 RIM 780.43 8" CLAY INV W 770.53 8" CLAY INV ESE 770.43
--	--	---	--	---	---	--	--------------------------------------	---	--	--	--	--	---	---	---	--	---	--	--



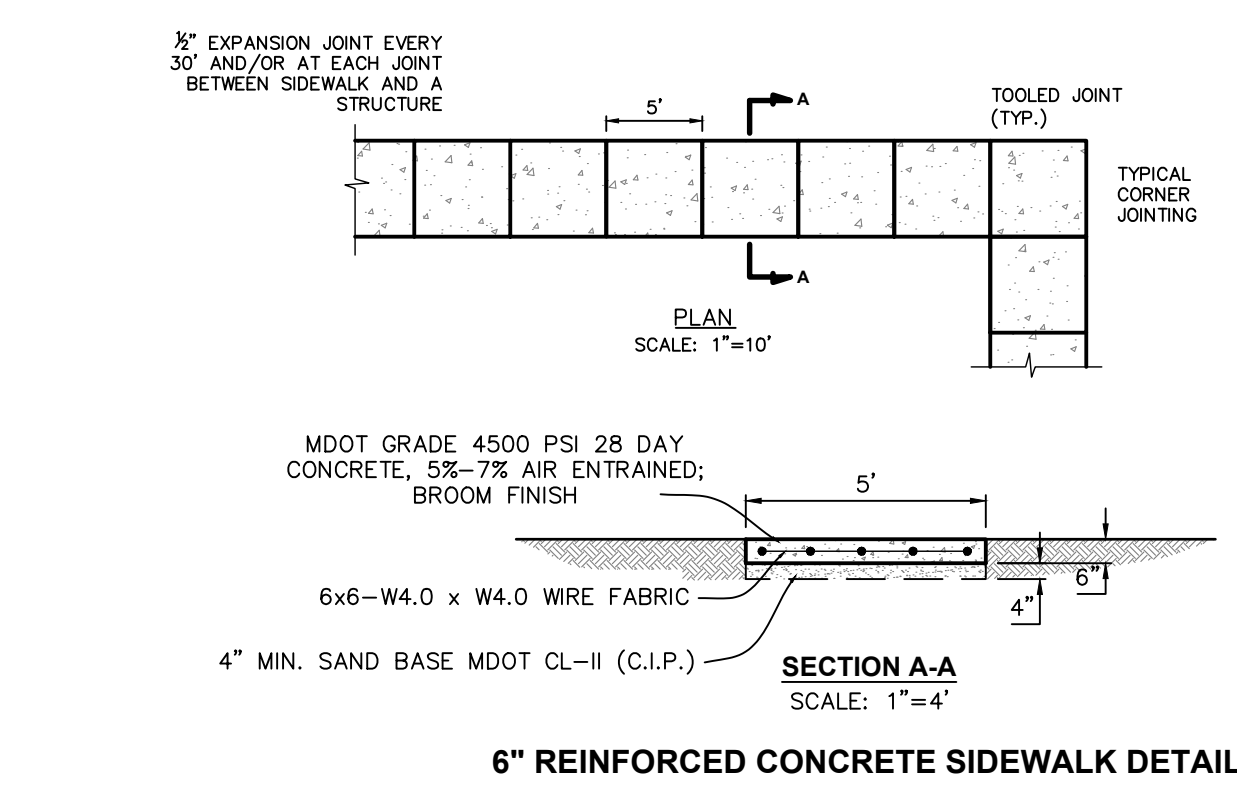
**SITE PLAN GENERAL NOTES:**

1. THE CONTRACTOR SHALL OBTAIN ALL PERMITS AND SURETY AS PART OF THIS WORK.
2. THE CONTRACTOR SHALL CALL MISS DIG 3 WORKING DAYS PRIOR TO THE START OF CONSTRUCTION.



**SOIL EROSION CONTROL NOTES:**

1. THE CONTRACTOR SHALL REMOVE ALL CONCRETE, BIT PAVEMENT, STORM SEWER STRUCTURES, STORM SEWER PIPE, LIGHT POLES, FENCING, UNDERGROUND ELECTRIC, VEGETATION AND SO ON TO PREPARE THE SITE FOR IMPROVEMENTS. CASTINGS, VALVE BOXES AND/OR OTHER UTILITY STRUCTURES TO REMAIN SHALL BE ADJUSTED AND PROTECTED FROM DAMAGE.
2. NORTH AMERICAN GREEN DS-150 EROSION CONTROL BLANKET SHALL BE PLACED ON ALL SLOPES 1:3 OR GREATER. SECURE BLANKET TO SLOPE PER MANUFACTURERS SPECIFICATIONS.
3. ALL SILT FENCING SHALL BE TRENCHED IN PRIOR TO COMMENCEMENT OF EARTHWORK ACTIVITIES.
4. SILT FENCING IS REQUIRED ALONG ALL DOWNSTREAM EDGES OF THE GRADING LIMITS AND MUST REMAIN IN PLACE UNTIL VEGETATION IS UNIFORMLY RE-ESTABLISHED.
5. ALL SOIL EROSION CONTROL MEASURES SHALL COMPLY WITH ACT 451 OF PUBLIC ACTS OF 1997, SOIL EROSION AND SEDIMENTATION CONTROL, NATURAL RESOURCES AND ENVIRONMENTAL PROTECTION ACT.
6. NEW & EXISTING STORM SEWER INLET POINTS SHALL BE PROTECTED FROM SEDIMENT INFILTRATION WITH INLET FABRIC DROP (SILT SACK).
7. ALL SOIL EROSION AND SEDIMENTATION CONTROL MEASURES SHALL BE INSPECTED AND MAINTAINED ON A DAILY BASIS, AND IMMEDIATELY FOLLOWING EVERY SIGNIFICANT RAINFALL EVENT.
8. ALL EXCESS SPOILS ARE TO BE REMOVED FROM THE SITE. OTHERWISE STOCKPILES MUST BE PROVIDED WITH TEMPORARY AND PERMANENT STABILIZATION MEASURES.
9. IF EXCESS DIRT IS TO BE PLACED ON SITE, THE LOCATION SHALL BE APPROVED BY THE PROPERTY OWNER & ENGINEER.
10. ALL TEMPORARY EROSION CONTROLS MUST REMAIN IN PLACE UNTIL VEGETATION IS UNIFORMLY RE-ESTABLISHED.
11. DUST CONTROL SHALL BE PROVIDED BY MEANS OF WATER DISTRIBUTION ON A REGULAR BASIS OVER AREAS THAT COULD POTENTIALLY PRODUCE DUST CONDITIONS.
12. CONTRACTOR SHALL SWEEP PAVED AREAS EACH DAY (OR MORE AS NEEDED) BY MECHANICAL MEANS FOR ALL PAVED AREAS IN AND AROUND THE PERIMETER OF THE PROJECT AFFECTED BY TRUCKING OPERATIONS.
13. ALL DISTURBED AREAS SHALL BE RESTORED WITH 4" TOPSOIL (MIN), SEED, FERTILIZER AND MULCH UNLESS OTHERWISE NOTED.



0 15 30  
PLAN SCALE: 1" = 30'

811  
Know what's below.  
Call before you dig.

PLAN REVISIONS  
01-18-2023 UNDER REVIEW  
03-19-2024 ISSUED FOR BIDS  
04-04-2024 ADDENDUM #1

Moore+Bruggink  
Consulting Engineers  
2020 Monroe Ave.  
Grand Rapids, MI 49505  
(616) 363-9801  
mailto:mbce@mbce.com

2555 INVERNESS RD SE, GRAND RAPIDS, MI 49546

SITE IMPROVEMENTS FOR  
**RIDGEMOOR MONTESORRI**  
CITY OF GRAND RAPIDS, KENT COUNTY, MICHIGAN

FIELD SURVEY / DATE  
JP-DTS / 11-09-22  
PROJECT NO. 220168.01  
DESIGN DRAWN BY: BCC  
DESIGNED BY: ZSV  
CHECKED BY: ZSV  
PLAN DATE: 01-24-23  
SHEET NUMBER  
**2 OF 5**

**BENCHMARKS - NAVD88**

ELEVATION - 786.70  
 SQUARE ON 18" CONCRETE LIGHT POLE  
 BASE, LOCATED 26' NW OF NORTH BACK OF  
 CURB TO PARKING LOT & 100'± NNE OF  
 THE NW CORNER OF PARKING LOT TO  
 RIDGEMOOR PARK ELEMENTARY SCHOOL.

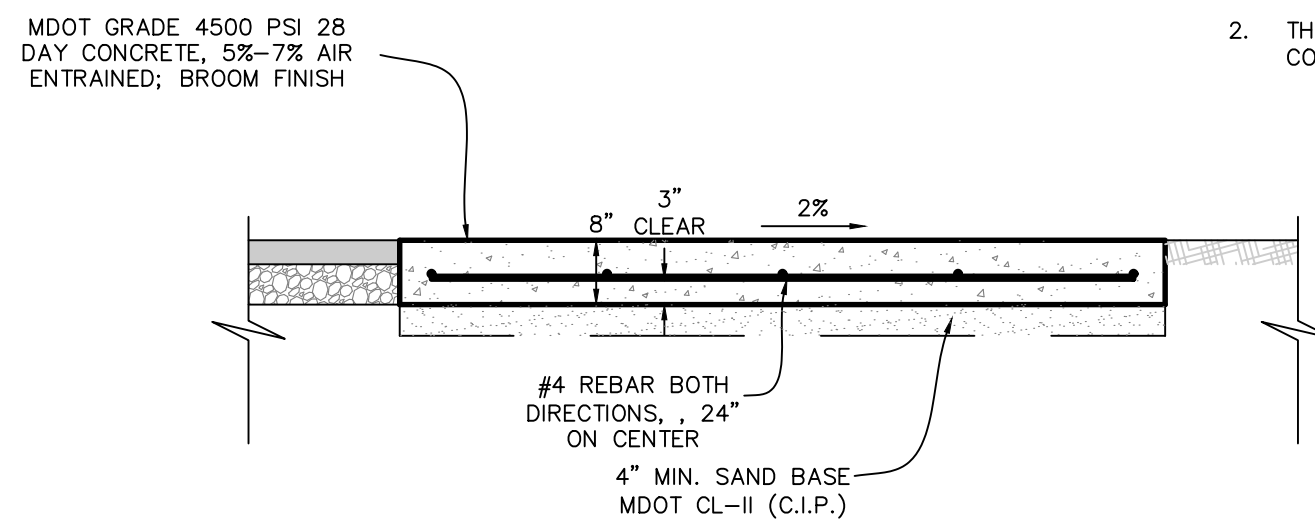
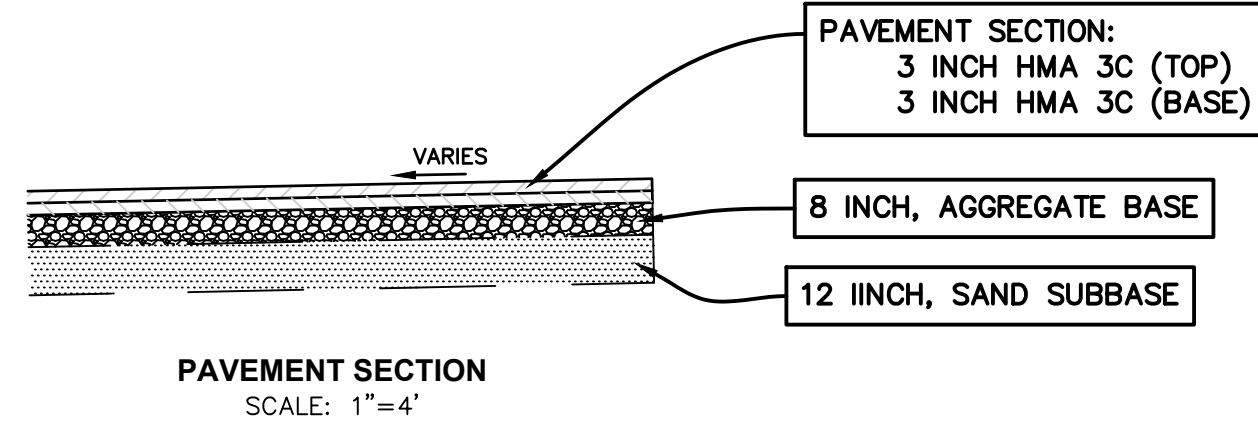
ELEVATION - 783.71  
 SQUARE ON THE NE CORNER OF A 2.5'x2.5'  
 CONCRETE WATER METER PIT, 9' WEST OF  
 BUILDING WALL, LOCATED AT THE MOST  
 NORTHWESTERLY CORNER OF RIDGEMOOR PARK  
 ELEMENTARY SCHOOL.

**CONTROL POINTS - MI SOUTH SPCS 83**

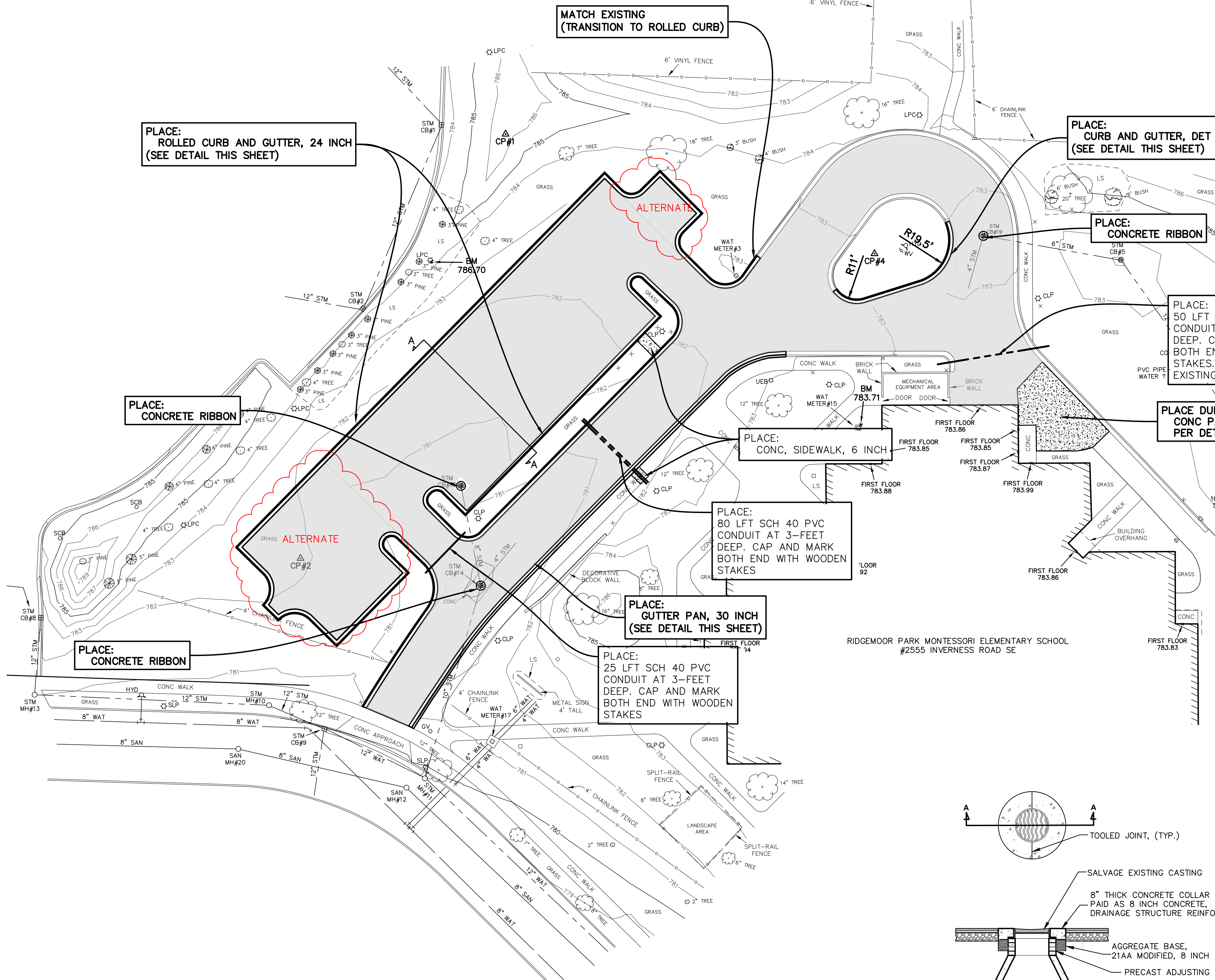
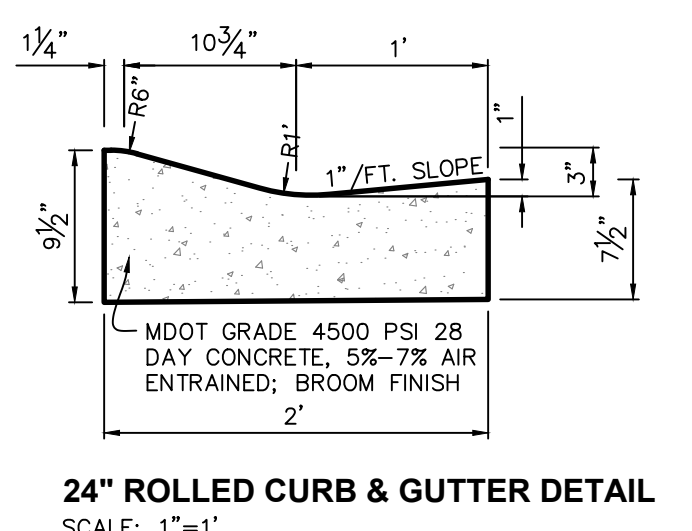
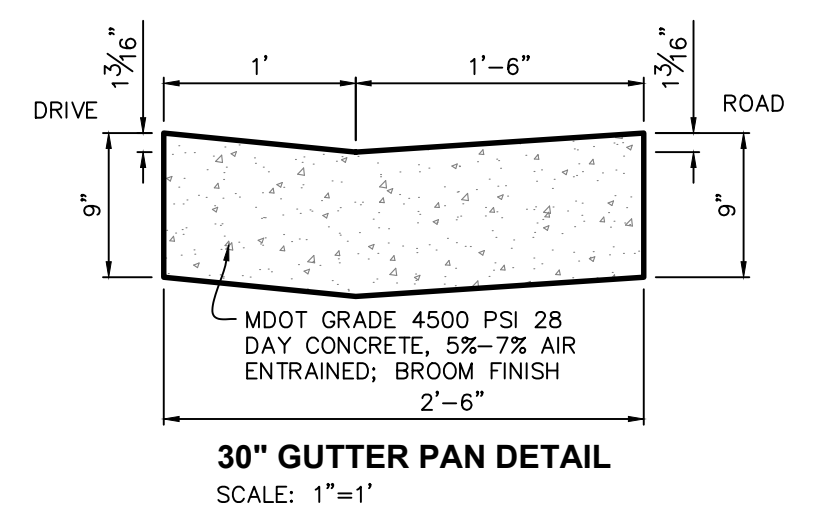
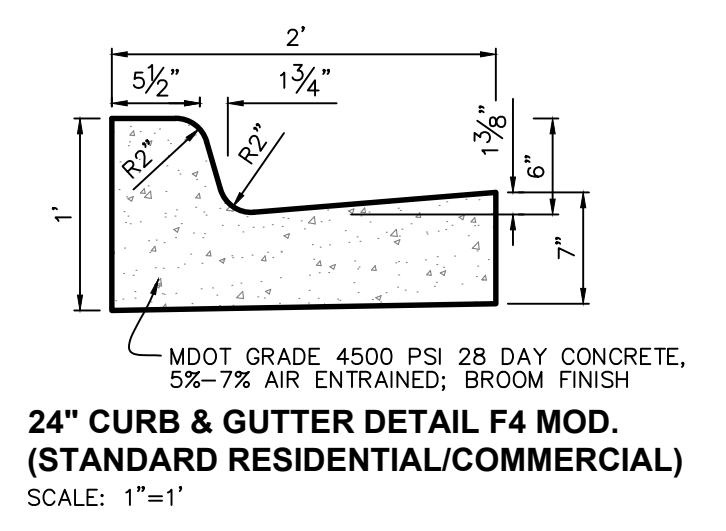
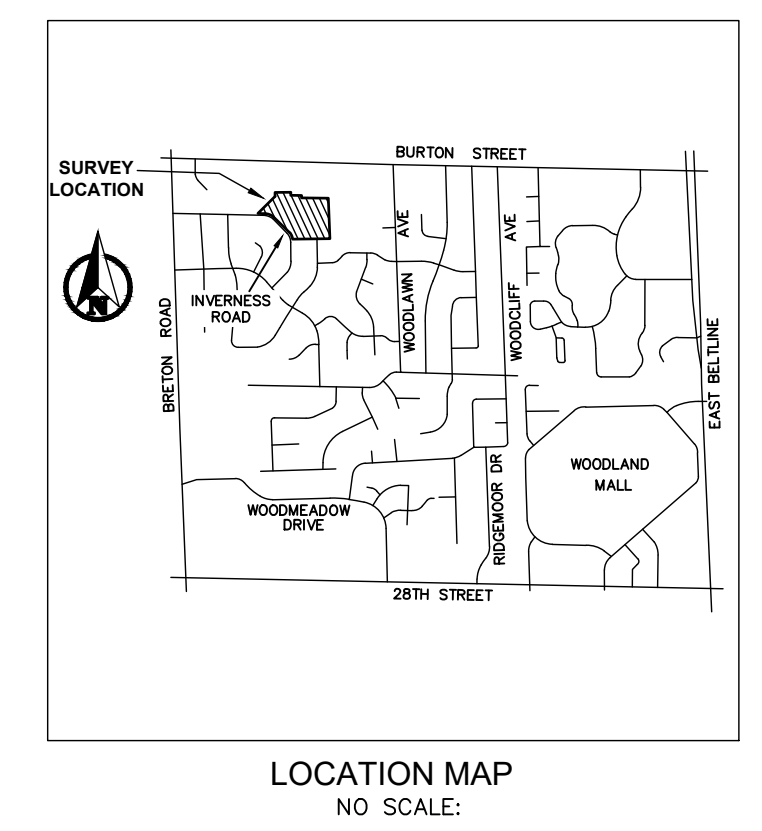
CP#1	CP#2	CP#3	CP#4
M+B RED CAP	M+B RED CAP	M+B RED CAP	M+B RED CAP
N 522085.8614	N 521897.0326	N 521992.3369	N 522032.4867
E 12791925.334	E 12791833.9773	E 12792089.7942	E 12792089.1337
ELEV 786.72	ELEV 782.26	ELEV 783.52	ELEV 783.67

**EXISTING UNDERGROUND UTILITY DATA**

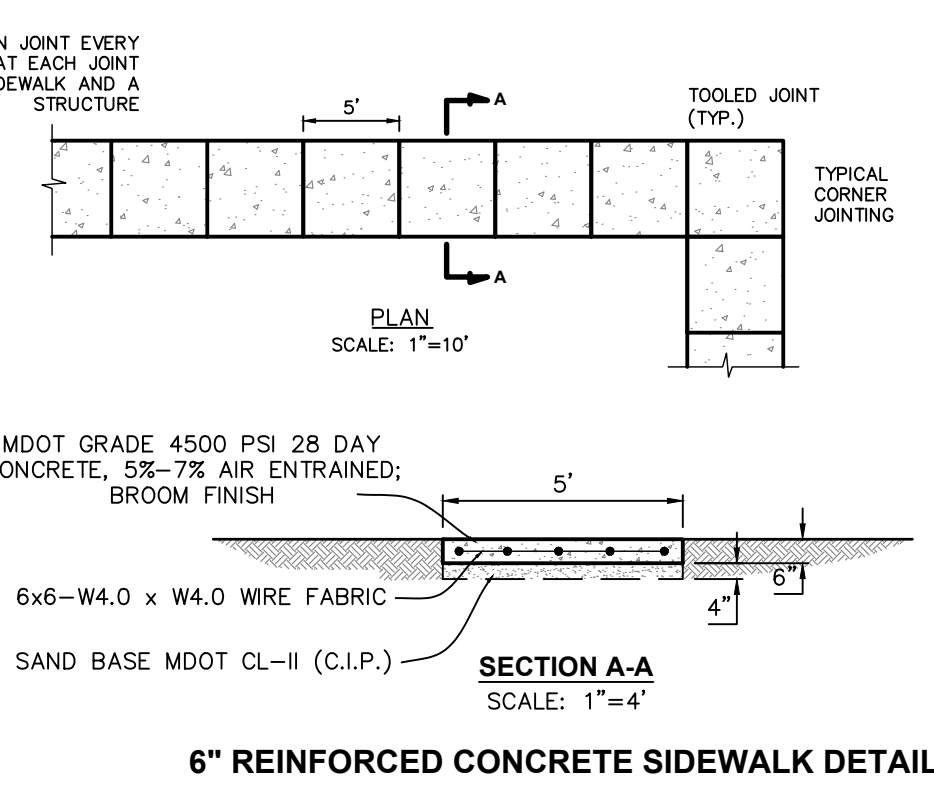
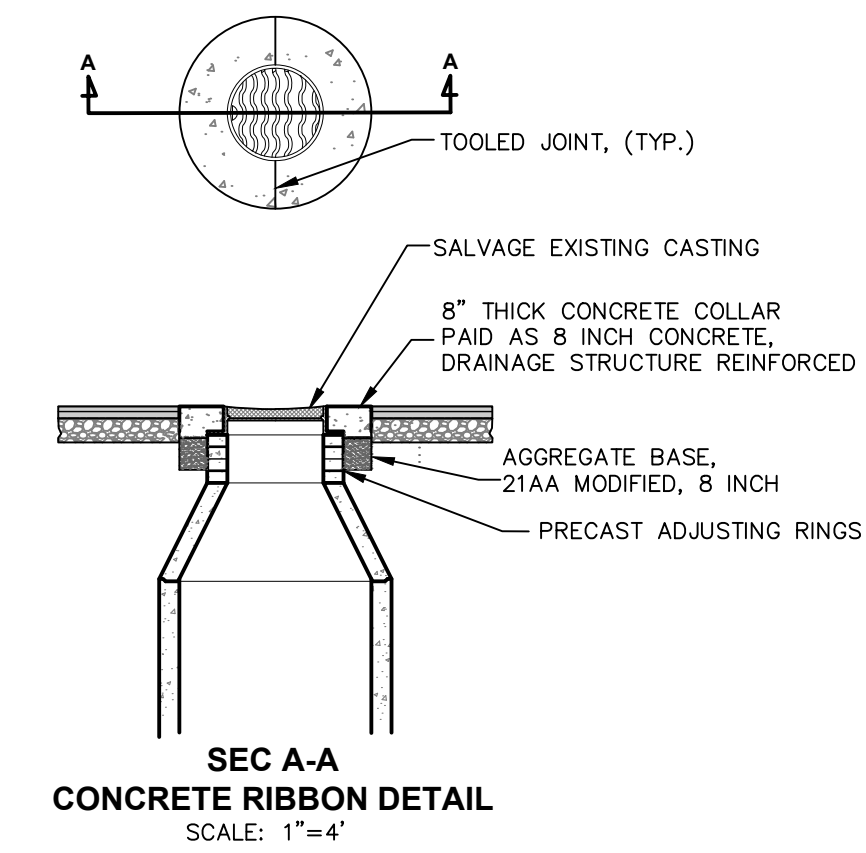
STORM CB#1 RIM 783.03 12" CONC INV NW 777.03 12" CONC INV SSW 776.83 BOTTOM STRUCTURE 775.18 2" DIA RIM 4" DIA PRECAST STRUCTURE	STORM CB#2 RIM 783.70 12" CONC INV NE 778.10 12" CONC INV WNW 778.10 12" CONC INV SE 777.66 BOTTOM STRUCTURE 777.51 2" DIA RIM 4" DIA PRECAST STRUCTURE BEEHIVE	STORM CB#3 RIM 781.16 6" CONC INV NE 778.06 8" CONC INV WNW 777.76 12" CONC INV NW 777.66 12" CONC INV SE 777.66 BOTTOM STRUCTURE 777.51 2" DIA RIM 4" DIA PRECAST STRUCTURE BEEHIVE	STORM CB#4 RIM 781.85 6" CONC INV W 778.25 12" CONC INV SE 778.25 BOTTOM STRUCTURE 778.25 2" DIA RIM 4" DIA PRECAST STRUCTURE BEEHIVE	STORM CB#5 RIM 781.85 6" CONC INV W 778.25 12" CONC INV SE 778.25 BOTTOM STRUCTURE 778.25 2" DIA RIM 4" DIA PRECAST STRUCTURE BEEHIVE	STORM CB#6 RIM 787.55 8" CONC INV W 778.75 12" CONC INV NW 776.75 BOTTOM STRUCTURE 776.55 2" DIA RIM 4" DIA PRECAST STRUCTURE	STORM CB#7 RIM 787.76 6" CONC INV SW 780.76 BOTTOM STRUCTURE 779.96 2" DIA RIM 4" DIA PRECAST STRUCTURE BEEHIVE	STORM CB#8 RIM 782.14 SILTSACK	STORM CB#9 RIM 779.72 12" CONC INV NW 777.07 12" CONC INV S 776.32 12" CONC INV SE 776.26 BOTTOM STRUCTURE 773.92 2" DIA RIM 4" DIA CONC BLOCK STRUCTURE	STORM MH#10 RIM 780.61 12" CONC INV SE 777.41 12" CONC INV W 777.36 BOTTOM STRUCTURE 777.21 2" DIA RIM 4" DIA CONC BLOCK	STORM MH#11 RIM 779.48 10" CONC INV NNE 775.28 12" CONC INV NW 775.98 12" CONC INV SE 774.78 BOTTOM STRUCTURE 774.78 2" DIA RIM 4" DIA CONC BLOCK STRUCTURE	SANITARY MH#12 RIM 779.95 8" CLAY INV NW 769.85 8" CLAY INV SE 769.65 2" DIA RIM 4" DIA PRECAST STRUCTURE	STORM MH#13 RIM 780.83 12" CONC INV N 777.83 12" CONC INV E 777.68 BOTTOM STRUCTURE 775.63 2" DIA RIM 4" DIA PRECAST STRUCTURE	STORM CB#14 RIM 779.79 4" PVC INV NE 776.79 8" PVC INV N 776.79 10" PVC INV SSW 776.59 BOTTOM STRUCTURE 776.19 2" DIA RIM 4" DIA PRECAST STRUCTURE	WATER METER PIT#15 RIM 783.63 TOP WIRES 782.63 BOTTOM STRUCTURE 781.63 2'x2' SO RIM 2'x2' CONC BLOCK STRUCTURE	STORM CB#16 RIM 780.24 8" PVC INV S 777.39 BOTTOM STRUCTURE 777.34 2" DIA RIM 4" DIA PRECAST STRUCTURE	WATER METER PIT#17 RIM 781.26 4" STEEL INV SW-NE 774.66 6" STEEL INV SW-NE 774.66 BOTTOM STRUCTURE 772.46 2'x2' SO RIM FALSE PRECAST STRUCTURE	WATER METER PIT#18 RIM 783.28 TOP WIRES 782.78 BOTTOM STRUCTURE 781.28 2'x2' SO RIM 2'x2' CONC BLOCK STRUCTURE	STORM CB#19 RIM 782.41 4" PVC INV SSW 778.81 6" PVC INV E 778.71 BOTTOM STRUCTURE 778.31 2" DIA RIM 4" DIA PRECAST STRUCTURE	SANITARY MH#20 RIM 780.43 8" CLAY INV W 770.53 8" CLAY INV ESE 770.43
--	---	---	--	--	---	---	--------------------------------------	--	--	---	--	--	---	--	---	--	--	--	--



- SITE PLAN GENERAL NOTES:**
1. THE CONTRACTOR SHALL OBTAIN ALL PERMITS AND SURETY AS PART OF THIS WORK.
  2. THE CONTRACTOR SHALL CALL MISS DIG 3 WORKING DAYS PRIOR TO THE START OF CONSTRUCTION.



- SOIL EROSION CONTROL NOTES:**
1. THE CONTRACTOR SHALL REMOVE ALL CONCRETE, BIT PAVEMENT, STORM SEWER STRUCTURES, STORM SEWER PIPE, LIGHT POLES, FENCING, UNDERGROUND ELECTRIC, VEGETATION AND SO ON TO PREPARE THE SITE FOR IMPROVEMENTS. CASTINGS, VALVE BOXES AND/OR OTHER UTILITY STRUCTURES TO REMAIN SHALL BE ADJUSTED AND PROTECTED FROM DAMAGE.
  2. NORTH AMERICAN GREEN DS-150 EROSION CONTROL BLANKET SHALL BE PLACED ON ALL SLOPES 1:3 OR GREATER. SECURE BLANKET TO SLOPE PER MANUFACTURERS SPECIFICATIONS.
  3. ALL SILT FENCING SHALL BE TRENCHED IN PRIOR TO COMMENCEMENT OF EARTHWORK ACTIVITIES.
  4. SILT FENCING IS REQUIRED ALONG ALL DOWNSTREAM EDGES OF THE GRADING LIMITS AND MUST REMAIN IN PLACE UNTIL VEGETATION IS UNIFORMLY RE-ESTABLISHED.
  5. ALL SOIL EROSION CONTROL MEASURES SHALL COMPLY WITH ACT 451 OF PUBLIC ACTS OF 1997, SOIL EROSION AND SEDIMENTATION CONTROL, NATURAL RESOURCES AND ENVIRONMENTAL PROTECTION ACT.
  6. NEW & EXISTING STORM SEWER INLET POINTS SHALL BE PROTECTED FROM SEDIMENT INFILTRATION WITH INLET FABRIC DROP (SILT SACK).
  7. ALL SOIL EROSION AND SEDIMENTATION CONTROL MEASURES SHALL BE INSPECTED AND MAINTAINED ON A DAILY BASIS, AND IMMEDIATELY FOLLOWING EVERY SIGNIFICANT RAINFALL EVENT.
  8. ALL EXCESS SPOILS ARE TO BE REMOVED FROM THE SITE. OTHERWISE STOCKPILES MUST BE PROVIDED WITH TEMPORARY AND PERMANENT STABILIZATION MEASURES.
  9. IF EXCESS DIRT IS TO BE PLACED ON SITE, THE LOCATION SHALL BE APPROVED BY THE PROPERTY OWNER & ENGINEER.
  10. ALL TEMPORARY EROSION CONTROLS MUST REMAIN IN PLACE UNTIL VEGETATION IS UNIFORMLY RE-ESTABLISHED.
  11. DUST CONTROL SHALL BE PROVIDED BY MEANS OF WATER DISTRIBUTION ON A REGULAR BASIS OVER AREAS THAT COULD POTENTIALLY PRODUCE DUST CONDITIONS.
  12. CONTRACTOR SHALL SWEEP PAVED AREAS EACH DAY (OR MORE AS NEEDED) BY MECHANICAL MEANS FOR ALL PAVED AREAS IN AND AROUND THE PERIMETER OF THE PROJECT AFFECTED BY TRUCKING OPERATIONS.
  13. ALL DISTURBED AREAS SHALL BE RESTORED WITH 4" TOPSOIL (MIN), SEED, FERTILIZER AND MULCH UNLESS OTHERWISE NOTED.



P:\220168.01 Grand Rapids Public Schools - Various Sites\CAD\DWG\RIDGEMOOR\220168.01 RIDGEMOOR DESIGN SHEETS.dwg - 4/12/2024 12:31:50 PM ZACHVOGT

0 15 30  
PLAN SCALE: 1" = 30'

Know what's below.  
Call before you dig.

---

PLAN REVISIONS

01-18-2023 UNDER REVIEW
03-19-2024 ISSUED FOR BIDS
04-04-2024 ADDENDUM #1

---

25555 INVERNESS RD SE, GRAND RAPIDS, MI 49546

**Moore+Bruggink**  
 Consulting Engineers  
 2020 Monroe Ave.  
 Grand Rapids, MI 49505  
 (616) 363-9801  
 mail@moorebruggink.com

---

SITE IMPROVEMENTS ALT FOR RIDGEMOOR MONTESORRI CITY OF GRAND RAPIDS, KENT COUNTY, MICHIGAN

FIELD SURVEY / DATE	JP-DTS / 11-09-22
PROJECT NO.	220168.01
DESIGN DRAWN BY:	BCC
DESIGNED BY:	ZSV
CHECKED BY:	ZSV
PLAN DATE:	01-24-23
SHEET NUMBER	3 OF 5

**BENCHMARKS - NAVD88**

ELEVATION - 786.70  
 SQUARE ON 18" CONCRETE LIGHT POLE  
 BASE, LOCATED 26' NW OF NORTH BACK OF  
 CURB TO PARKING LOT & 100'± NNE OF  
 THE NW CORNER OF PARKING LOT TO  
 RIDGEMOOR PARK ELEMENTARY SCHOOL.

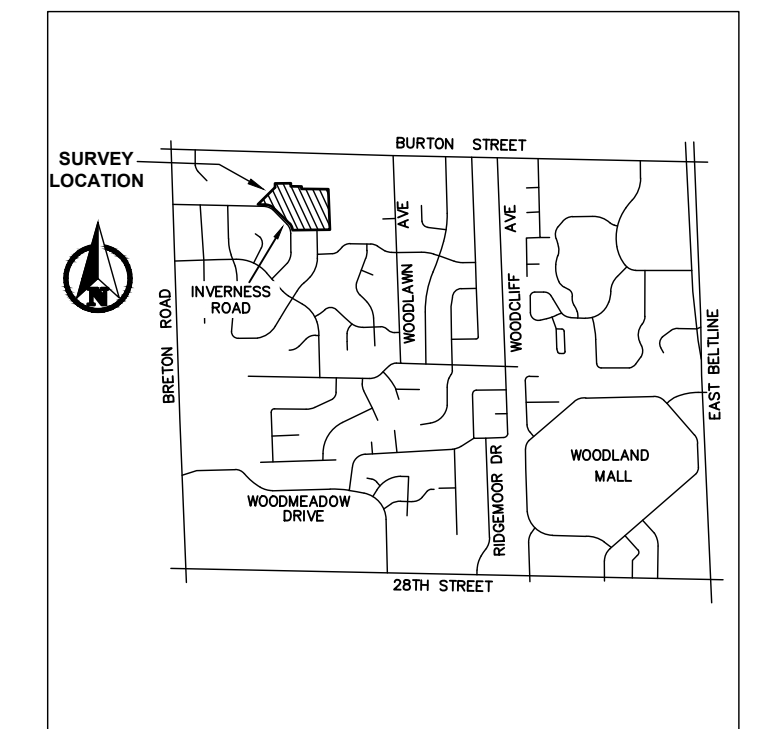
ELEVATION - 783.71  
 SQUARE ON THE NE CORNER OF A 2.5'x2.5'  
 CONCRETE WATER METER PIT, 9' WEST OF  
 BUILDING WALL, LOCATED AT THE MOST  
 NORTHWESTERLY CORNER OF RIDGEMOOR PARK  
 ELEMENTARY SCHOOL.

**CONTROL POINTS - MI SOUTH SPCS 83**

CP#1	CP#2	CP#3	CP#4
M+B RED CAP	M+B RED CAP	M+B RED CAP	M+B RED CAP
N 522085.8614	N 521897.0326	N 521992.3369	N 522032.4867
E 12791923.1334	E 12791833.9773	E 12792263.7942	E 12792089.1337
ELEV 786.72	ELEV 782.26	ELEV 783.52	ELEV 783.67

**EXISTING UNDERGROUND UTILITY DATA**

- |  |   |
|--|---|
| <p>STORM CB#1<br/>                 RIM 783.03<br/>                 12" CONC INV NW 777.03<br/>                 12" CONC INV SSW 776.83<br/>                 BOTTOM STRUCTURE 775.18<br/>                 2' DIA RIM<br/>                 4' DIA PRECAST STRUCTURE</p> <p>STORM CB#2<br/>                 RIM 783.70<br/>                 12" CONC INV NE 778.10<br/>                 12" CONC INV WNW 778.10<br/>                 BOTTOM STRUCTURE 777.10<br/>                 2' DIA RIM<br/>                 4' DIA PRECAST STRUCTURE</p> <p>WATER METER PIT#3<br/>                 RIM 783.00<br/>                 TOP WIRES 781.90<br/>                 BOTTOM STRUCTURE 781.20<br/>                 2'x2' SO RIM<br/>                 2'x2' CONC BLOCK STRUCTURE</p> <p>STORM CB#4<br/>                 RIM 781.16<br/>                 6" CONC INV NE 778.06<br/>                 8" CONC INV WNW 777.76<br/>                 12" CONC INV NW 777.66<br/>                 12" CONC INV SE 777.66<br/>                 BOTTOM STRUCTURE 777.51<br/>                 2' DIA RIM<br/>                 4' DIA PRECAST STRUCTURE BEEHIVE</p> <p>STORM CB#5<br/>                 RIM 781.85<br/>                 6" CONC INV W 778.25<br/>                 12" CONC INV SE 778.25<br/>                 BOTTOM STRUCTURE 778.25<br/>                 2' DIA RIM<br/>                 4' DIA PRECAST STRUCTURE BEEHIVE</p> <p>STORM CB#6<br/>                 RIM 787.55<br/>                 8" CONC INV W 776.75<br/>                 12" CONC INV NW 776.75<br/>                 BOTTOM STRUCTURE 776.55<br/>                 2' DIA RIM<br/>                 4' DIA PRECAST STRUCTURE</p> <p>STORM CB#7<br/>                 RIM 787.76<br/>                 6" CONC INV SW 780.76<br/>                 BOTTOM STRUCTURE 779.96<br/>                 2' DIA RIM<br/>                 4' DIA PRECAST STRUCTURE BEEHIVE</p> <p>STORM CB#8<br/>                 RIM 782.14<br/>                 SILTSACK</p> <p>STORM CB#9<br/>                 RIM 779.72<br/>                 12" CONC INV NW 777.07<br/>                 12" CONC INV S 776.32<br/>                 12" CONC INV SE 776.26<br/>                 BOTTOM STRUCTURE 773.92<br/>                 2' DIA RIM<br/>                 4' DIA CONC BLOCK STRUCTURE</p> <p>STORM MH#10<br/>                 RIM 780.61<br/>                 12" CONC INV SE 777.41<br/>                 12" CONC INV W 777.36<br/>                 BOTTOM STRUCTURE 777.21<br/>                 2' DIA RIM<br/>                 4' DIA CONC BLOCK</p> | <p>STRUCTURE</p> <p>STORM MH#11<br/>                 RIM 779.48<br/>                 10" CONC INV NNE 775.28<br/>                 12" CONC INV NW 775.98<br/>                 12" CONC INV SE 774.78<br/>                 BOTTOM STRUCTURE 774.78<br/>                 2' DIA RIM<br/>                 4' DIA CONC BLOCK STRUCTURE</p> <p>SANITARY MH#12<br/>                 RIM 779.95<br/>                 8" CLAY INV NW 769.85<br/>                 8" CLAY INV SE 769.65<br/>                 2' DIA RIM<br/>                 4' DIA PRECAST STRUCTURE</p> <p>STORM MH#13<br/>                 RIM 780.33<br/>                 12" CONC INV N 777.83<br/>                 12" CONC INV E 777.68<br/>                 BOTTOM STRUCTURE 775.63<br/>                 2' DIA RIM<br/>                 4' DIA PRECAST STRUCTURE</p> <p>STORM CB#14<br/>                 RIM 779.79<br/>                 4" PVC INV NE 776.79<br/>                 8" PVC INV N 776.79<br/>                 10" PVC INV SSW 776.59<br/>                 BOTTOM STRUCTURE 776.19<br/>                 2' DIA RIM<br/>                 4' DIA PRECAST STRUCTURE</p> <p>WATER METER PIT#15<br/>                 RIM 783.63<br/>                 TOP WIRES 782.63<br/>                 BOTTOM STRUCTURE 781.63<br/>                 2'x2' SO RIM<br/>                 2'x2' CONC BLOCK STRUCTURE</p> <p>STORM CB#16<br/>                 RIM 780.24<br/>                 8" PVC INV S 777.39<br/>                 BOTTOM STRUCTURE 777.34<br/>                 2' DIA RIM<br/>                 4' DIA PRECAST STRUCTURE</p> <p>WATER METER PIT#17<br/>                 RIM 781.28<br/>                 4" STEEL INV SW-NE 774.66<br/>                 6" STEEL INV SW-NE 774.66<br/>                 BOTTOM STRUCTURE 772.46<br/>                 2'x2' SO RIM<br/>                 FALSE PRECAST STRUCTURE</p> <p>WATER METER PIT#18<br/>                 RIM 783.28<br/>                 TOP WIRES 782.78<br/>                 BOTTOM STRUCTURE 781.28<br/>                 2'x2' SO RIM<br/>                 2'x2' CONC BLOCK STRUCTURE</p> <p>STORM CB#19<br/>                 RIM 782.41<br/>                 4" PVC INV SSW 778.81<br/>                 6" PVC INV E 778.71<br/>                 BOTTOM STRUCTURE 778.31<br/>                 2' DIA RIM<br/>                 4' DIA PRECAST STRUCTURE</p> <p>SANITARY MH#20<br/>                 RIM 780.43<br/>                 8" CLAY INV W 770.53<br/>                 8" CLAY INV SE 770.43</p> |
|--|---|



0 15 30  
 PLAN SCALE: 1" = 30'

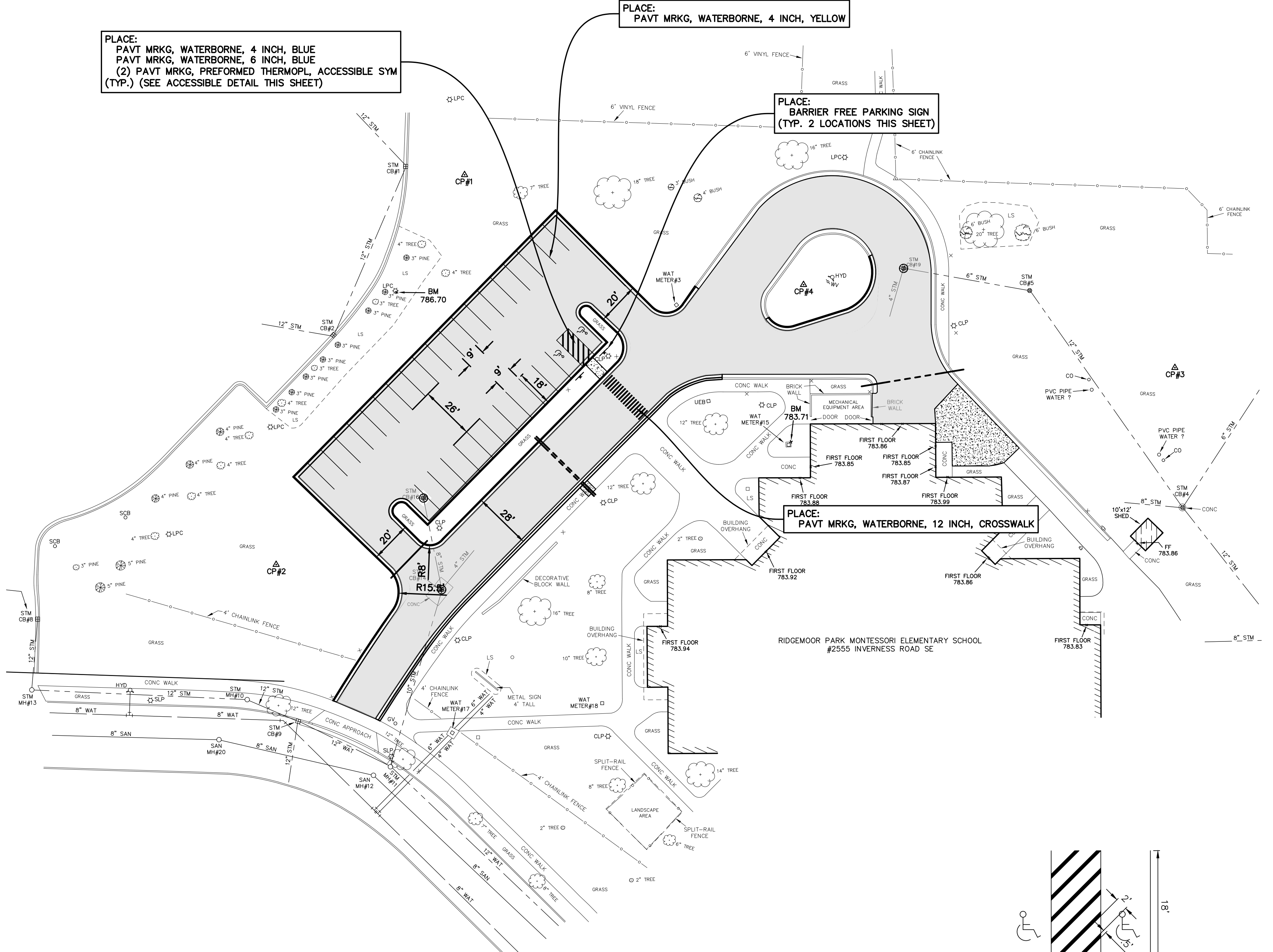
**811**  
 Know what's below.  
 Call before you dig.

PLACE:  
 PAVT MRKG, WATERBORNE, 4 INCH, BLUE  
 PAVT MRKG, WATERBORNE, 6 INCH, BLUE  
 (2) PAVT MRKG, PREFORMED THERMOPL ACCESSIBLE SYM  
 (TYP.) (SEE ACCESSIBLE DETAIL THIS SHEET)

PLACE:  
 PAVT MRKG, WATERBORNE, 4 INCH, YELLOW

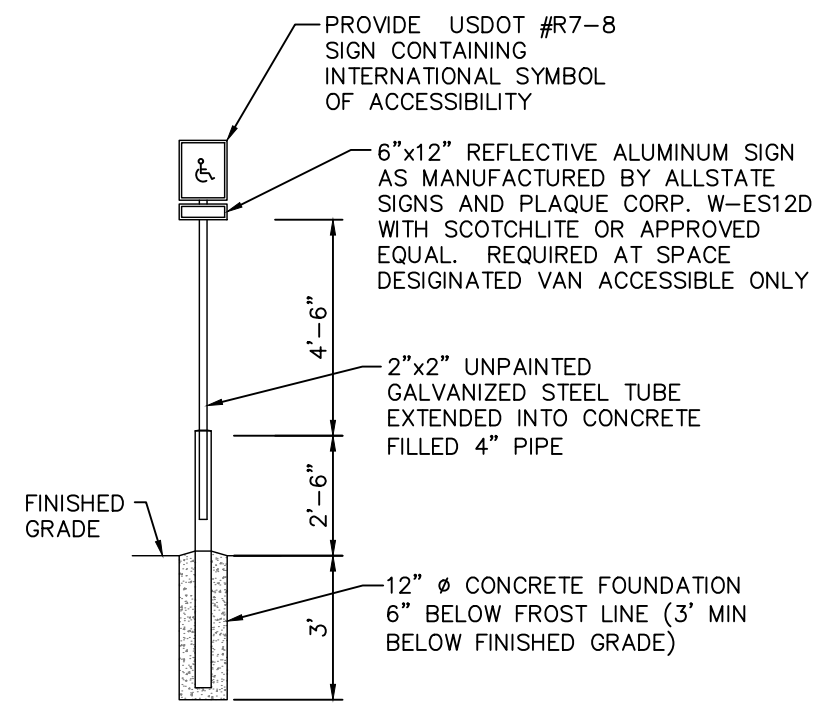
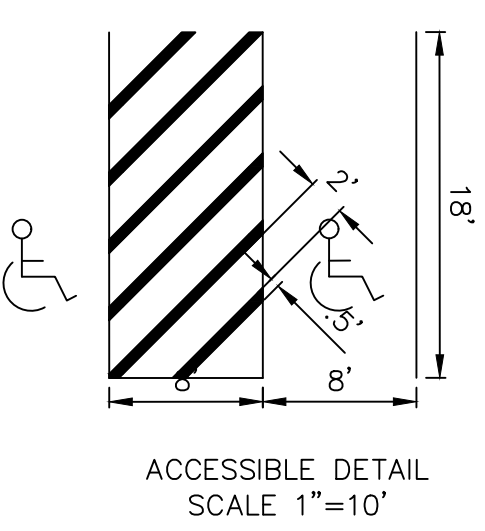
PLACE:  
 BARRIER FREE PARKING SIGN  
 (TYP. 2 LOCATIONS THIS SHEET)

PLACE:  
 PAVT MRKG, WATERBORNE, 12 INCH, CROSSWALK



**PARKING SUMMARY**

EXISTING REGULAR:	31
EXISTING ADA:	2
PROPOSED REGULAR:	31
PROPOSED ADA:	2
NET GAINED SPACES:	0

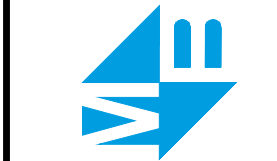


P:\220168.01 Grand Rapids Public Schools - Various Sites\CADD\DWG\RIDGEMOOR\220168.01 RIDGEMOOR DESIGN SHEETS.dwg, 4/14/2024, 12:31:34 PM, ZACH VOOGT

PLAN REVISIONS

01-18-2023	UNDER REVIEW
03-19-2024	ISSUED FOR BIDS
04-04-2024	ADDENDUM #1

**Moore+Bruggink**  
 Consulting Engineers  
 2020 Monroe Ave.  
 Grand Rapids, MI 49505  
 (616) 363-9801  
 mail@moorebruggink.com



**PAVEMENT MARKINGS FOR**  
**RIDGEMOOR MONTESORRI**  
 CITY OF GRAND RAPIDS, KENT COUNTY, MICHIGAN

2555 INVERNESS RD SE, GRAND RAPIDS, MI 49546

FIELD SURVEY / DATE	JP-DTS / 11-09-22
PROJECT NO.	220168.01
DESIGN DRAWN BY:	BCC
DESIGNED BY:	ZSV
CHECKED BY:	ZSV
PLAN DATE:	01-24-23
SHEET NUMBER	4 OF 5

**BENCHMARKS - NAVD88**

ELEVATION - 786.70  
 SQUARE ON 18" CONCRETE LIGHT POLE  
 BASE, LOCATED 26' NW OF NORTH BACK OF  
 CURB TO PARKING LOT & 100'± NNE OF  
 THE NW CORNER OF PARKING LOT TO  
 RIDGEMOOR PARK ELEMENTARY SCHOOL.

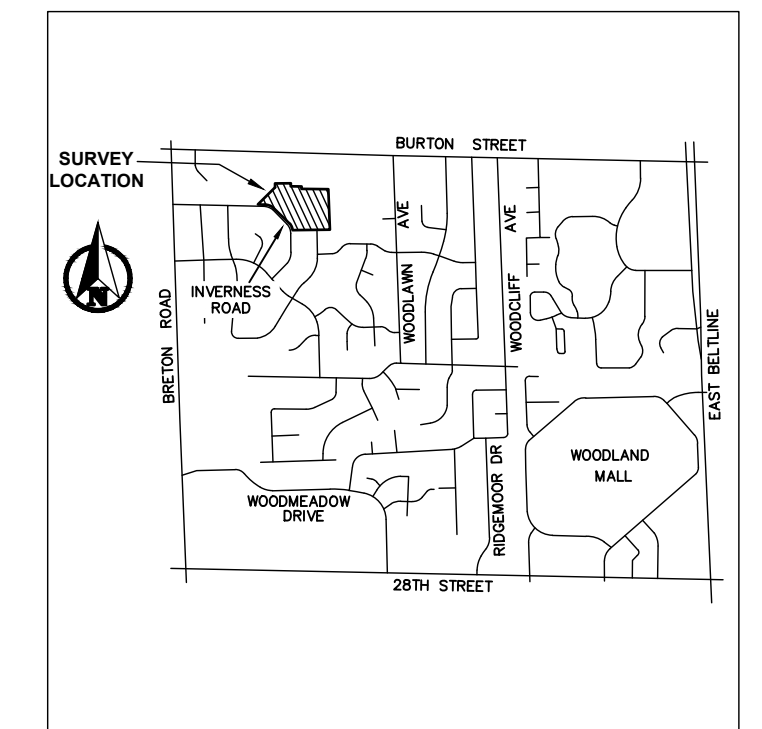
ELEVATION - 783.71  
 SQUARE ON THE NE CORNER OF A 2.5'x2.5'  
 CONCRETE WATER METER PIT, 9' WEST OF  
 BUILDING WALL, LOCATED AT THE MOST  
 NORTHWESTERLY CORNER OF RIDGEMOOR PARK  
 ELEMENTARY SCHOOL.

**CONTROL POINTS - MI SOUTH SPCS 83**

CP#1	CP#2	CP#3	CP#4
M+B RED CAP	M+B RED CAP	M+B RED CAP	M+B RED CAP
N 522085.8614	N 521897.0326	N 521992.3369	N 522032.4867
E 12791923.1334	E 12791833.9773	E 12792263.7942	E 12792089.1337
ELEV 786.72	ELEV 782.26	ELEV 783.52	ELEV 783.67

**EXISTING UNDERGROUND UTILITY DATA**

- |  |  |
|--|--|
| <p>STORM CB#1<br/>                 RIM 783.03<br/>                 12" CONC INV NW 777.03<br/>                 12" CONC INV SSW 776.83<br/>                 BOTTOM STRUCTURE 775.18<br/>                 2' DIA RIM<br/>                 4' DIA PRECAST STRUCTURE</p> <p>STORM CB#2<br/>                 RIM 783.70<br/>                 12" CONC INV NE 778.10<br/>                 12" CONC INV WNW 778.10<br/>                 BOTTOM STRUCTURE 777.10<br/>                 2' DIA RIM<br/>                 4' DIA PRECAST STRUCTURE</p> <p>WATER METER PIT#3<br/>                 RIM 783.00<br/>                 TOP WIRES 781.90<br/>                 BOTTOM STRUCTURE 781.20<br/>                 2'x2' SO RIM<br/>                 2'x2' CONC BLOCK STRUCTURE</p> <p>STORM CB#4<br/>                 RIM 781.16<br/>                 6" CONC INV NE 778.06<br/>                 8" CONC INV WNW 777.76<br/>                 12" CONC INV NW 777.66<br/>                 12" CONC INV SE 777.66<br/>                 BOTTOM STRUCTURE 777.51<br/>                 2' DIA RIM<br/>                 4' DIA PRECAST STRUCTURE BEEHIVE</p> <p>STORM CB#5<br/>                 RIM 781.85<br/>                 6" CONC INV W 778.25<br/>                 12" CONC INV SE 778.25<br/>                 BOTTOM STRUCTURE 778.25<br/>                 2' DIA RIM<br/>                 4' DIA PRECAST STRUCTURE BEEHIVE</p> <p>STORM CB#6<br/>                 RIM 787.55<br/>                 8" CONC INV W 776.75<br/>                 12" CONC INV NW 776.75<br/>                 BOTTOM STRUCTURE 776.55<br/>                 2' DIA RIM<br/>                 4' DIA PRECAST STRUCTURE</p> <p>STORM CB#7<br/>                 RIM 787.76<br/>                 6" CONC INV SW 780.76<br/>                 BOTTOM STRUCTURE 779.96<br/>                 2' DIA RIM<br/>                 4' DIA PRECAST STRUCTURE BEEHIVE</p> <p>STORM CB#8<br/>                 RIM 782.14<br/>                 SILTSACK</p> <p>STORM CB#9<br/>                 RIM 779.72<br/>                 12" CONC INV NW 777.07<br/>                 12" CONC INV S 776.32<br/>                 12" CONC INV SE 776.26<br/>                 BOTTOM STRUCTURE 773.92<br/>                 2' DIA RIM<br/>                 4' DIA CONC BLOCK STRUCTURE</p> <p>STORM MH#10<br/>                 RIM 780.61<br/>                 12" CONC INV SE 777.41<br/>                 12" CONC INV W 777.36<br/>                 BOTTOM STRUCTURE 777.21<br/>                 2' DIA RIM<br/>                 4' DIA CONC BLOCK</p> | <p>STRUCTURE</p> <p>STORM MH#11<br/>                 RIM 779.48<br/>                 10" CONC INV NNE 775.28<br/>                 12" CONC INV NW 775.98<br/>                 12" CONC INV SE 774.78<br/>                 BOTTOM STRUCTURE 774.78<br/>                 2' DIA RIM<br/>                 4' DIA CONC BLOCK STRUCTURE</p> <p>SANITARY MH#12<br/>                 RIM 779.95<br/>                 8" CLAY INV NW 769.85<br/>                 8" CLAY INV SE 769.65<br/>                 2' DIA RIM<br/>                 4' DIA PRECAST STRUCTURE</p> <p>STORM MH#13<br/>                 RIM 780.83<br/>                 12" CONC INV N 777.83<br/>                 12" CONC INV E 777.68<br/>                 BOTTOM STRUCTURE 775.63<br/>                 2' DIA RIM<br/>                 4' DIA PRECAST STRUCTURE</p> <p>STORM CB#14<br/>                 RIM 779.79<br/>                 4" PVC INV NE 776.79<br/>                 8" PVC INV N 776.79<br/>                 10" PVC INV SSW 776.59<br/>                 BOTTOM STRUCTURE 776.19<br/>                 2' DIA RIM<br/>                 4' DIA PRECAST STRUCTURE</p> <p>WATER METER PIT#15<br/>                 RIM 783.63<br/>                 TOP WIRES 782.63<br/>                 BOTTOM STRUCTURE 781.63<br/>                 2'x2' SO RIM<br/>                 2'x2' CONC BLOCK STRUCTURE</p> <p>STORM CB#16<br/>                 RIM 780.24<br/>                 8" PVC INV S 777.39<br/>                 BOTTOM STRUCTURE 777.34<br/>                 2' DIA RIM<br/>                 4' DIA PRECAST STRUCTURE</p> <p>WATER METER PIT#17<br/>                 RIM 781.28<br/>                 4" STEEL INV SW-NE 774.66<br/>                 6" STEEL INV SW-NE 774.66<br/>                 BOTTOM STRUCTURE 772.46<br/>                 2'x2' SO RIM<br/>                 FALSE PRECAST STRUCTURE</p> <p>WATER METER PIT#18<br/>                 RIM 783.28<br/>                 TOP WIRES 782.78<br/>                 BOTTOM STRUCTURE 781.28<br/>                 2'x2' SO RIM<br/>                 2'x2' CONC BLOCK STRUCTURE</p> <p>STORM CB#19<br/>                 RIM 782.41<br/>                 4" PVC INV SSW 778.81<br/>                 6" PVC INV E 778.71<br/>                 BOTTOM STRUCTURE 778.31<br/>                 2' DIA RIM<br/>                 4' DIA PRECAST STRUCTURE</p> <p>SANITARY MH#20<br/>                 RIM 780.43<br/>                 8" CLAY INV W 770.53<br/>                 8" CLAY INV ESE 770.43</p> |
|--|--|



0 15 30  
 PLAN SCALE: 1" = 30'

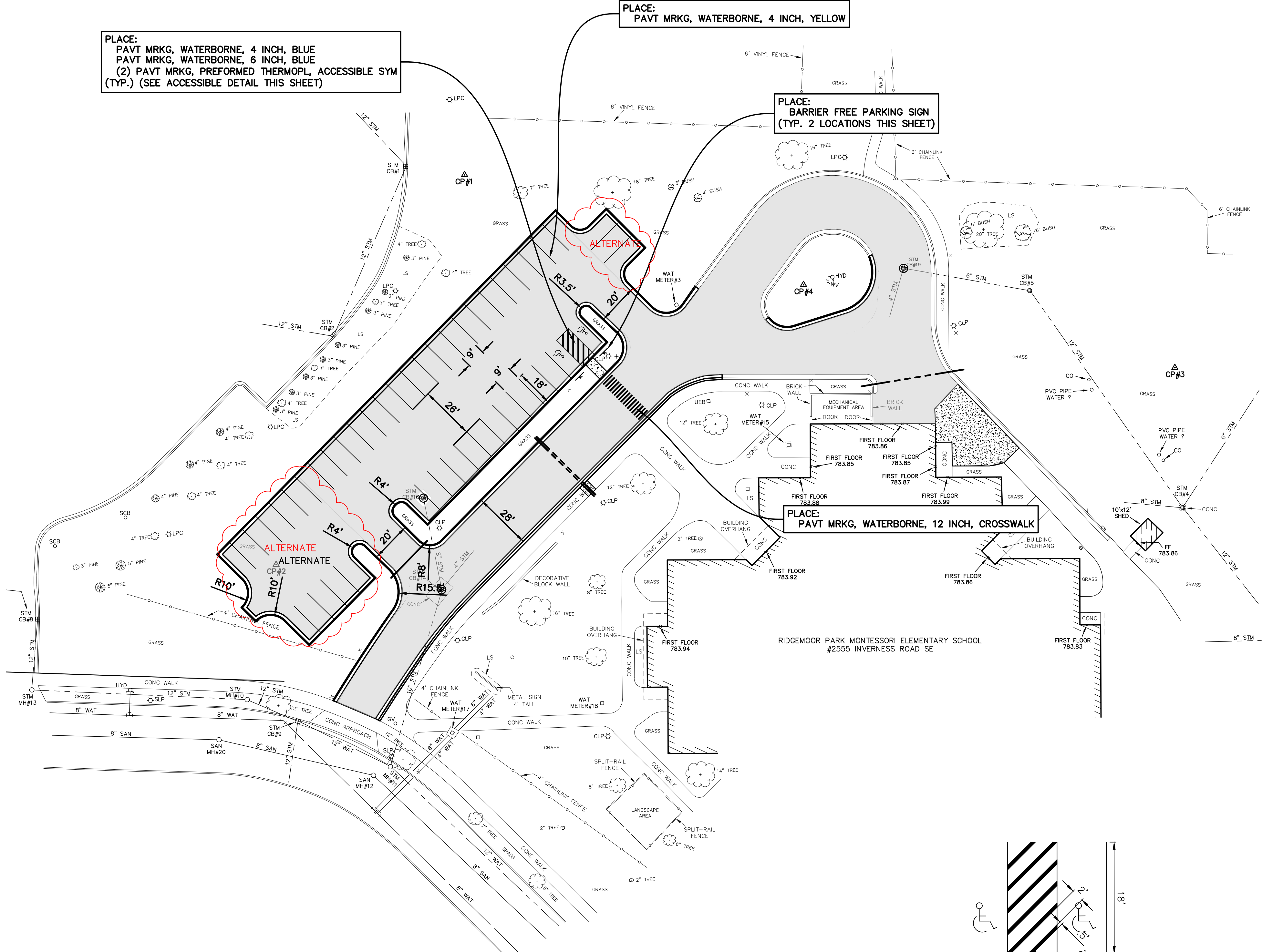
**811**  
 Know what's below.  
 Call before you dig.

PLACE:  
 PAVT MRKG, WATERBORNE, 4 INCH, BLUE  
 PAVT MRKG, WATERBORNE, 6 INCH, BLUE  
 (2) PAVT MRKG, PREFORMED THERMOPL ACCESSIBLE SYM  
 (TYP.) (SEE ACCESSIBLE DETAIL THIS SHEET)

PLACE:  
 PAVT MRKG, WATERBORNE, 4 INCH, YELLOW

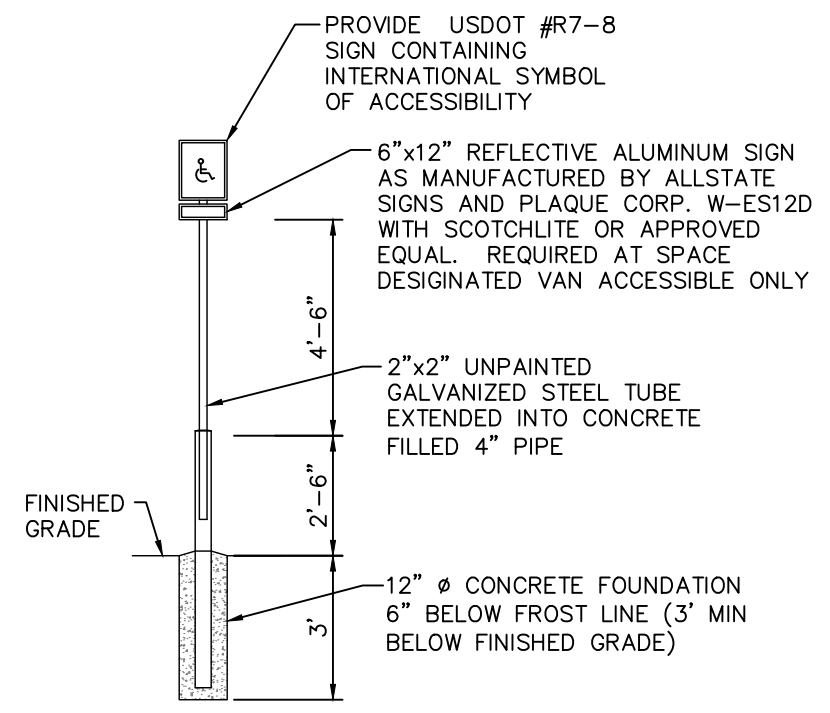
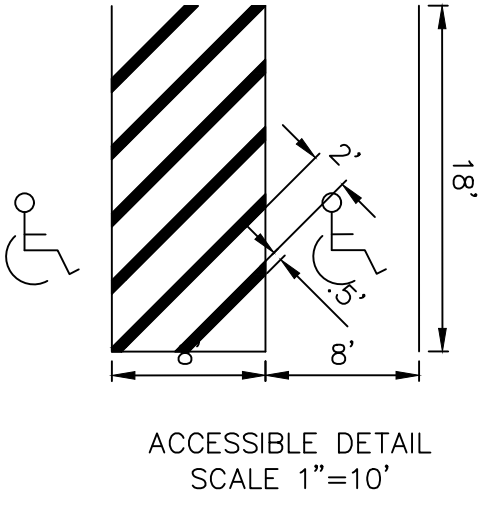
PLACE:  
 BARRIER FREE PARKING SIGN  
 (TYP. 2 LOCATIONS THIS SHEET)

PLACE:  
 PAVT MRKG, WATERBORNE, 12 INCH, CROSSWALK



**PARKING SUMMARY**

EXISTING REGULAR:	30
EXISTING ADA:	2
PROPOSED REGULAR:	44
PROPOSED ADA:	2
NET GAINED SPACES:	14

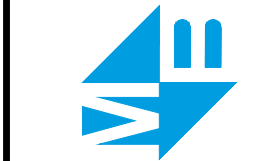


P:220168.01 Grand Rapids Public Schools - Various Sites CAD/DWG/RIDGEMOOR 220168.01 RIDGEMOOR DESIGN SHEETS Date: 4/4/2024 12:31:39 PM ZACHVOGT

PLAN REVISIONS

01-18-2023	UNDER REVIEW
03-19-2024	ISSUED FOR BIDS
04-04-2024	ADDENDUM #1

**Moore+Bruggink**  
 Consulting Engineers  
 2020 Monroe Ave.  
 Grand Rapids, MI 49505  
 (616) 363-9801  
 mail@moorebruggink.com



2555 INVERNESS RD SE, GRAND RAPIDS, MI 49546

**PAVEMENT MARKINGS ALT**  
 FOR  
**RIDGEMOOR MONTESSORI**  
 CITY OF GRAND RAPIDS, KENT COUNTY, MICHIGAN

FIELD SURVEY / DATE	JP-DTS / 11-09-22
PROJECT NO.	220168.01
DESIGN DRAWN BY:	BCC
DESIGNED BY:	ZSV
CHECKED BY:	ZSV
PLAN DATE:	01-24-23
SHEET NUMBER	5 OF 5